



# Virus Watch

Week ending 23<sup>rd</sup> June 2024

## Key Points

### Influenza and influenza-like illnesses (ILI)

- In the past week, all indicators of ILI activity increased or remained stable.
- Influenza notifications increased and remained above the seasonal threshold in the past week.
- Respiratory syncytial virus (RSV) notifications increased in the past week.
- Total non-influenza respiratory virus detections at PathWest Laboratory Medicine (PathWest) decreased in the past week.
- In the past week, 420 COVID-19 PCR positive cases were notified in WA, an increase of 3% compared to the previous week. See [COVID-19 surveillance report](#) (fortnightly data).

### Gastroenteritis

- The number of presentations to EDs increased but were in the lower range of values usually reported at this time of year. The rate of gastroenteritis presentations to sentinel GPs increased but remained below the baseline in the past week.
- Rotavirus notifications to the Department of Health and norovirus detections at PathWest remained stable in the past week.

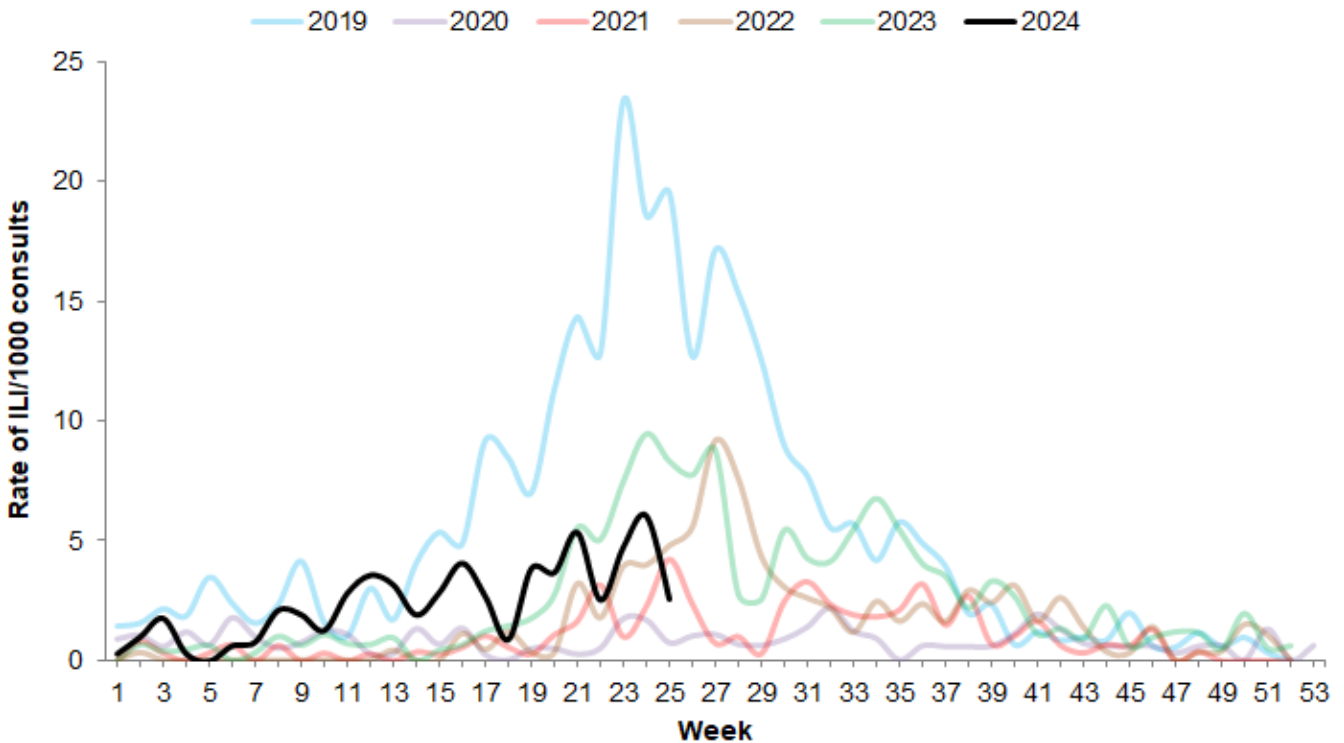
### Other vaccine-preventable diseases

- **Chickenpox and shingles:** The number of chickenpox and shingles presentations to EDs increased slightly in the past week. There was one chickenpox presentation to sentinel GPs in the past week and the rate of shingles presentations increased but remained below the baseline.
- **Measles:** No measles cases were notified in the past week.
- **Mumps:** Two mumps cases were notified in the past week.
- **Rubella:** No rubella cases were notified in the past week.
- **Invasive meningococcal disease (IMD):** No IMD cases were notified in the past week.

## Influenza and influenza-like illnesses (ILI)

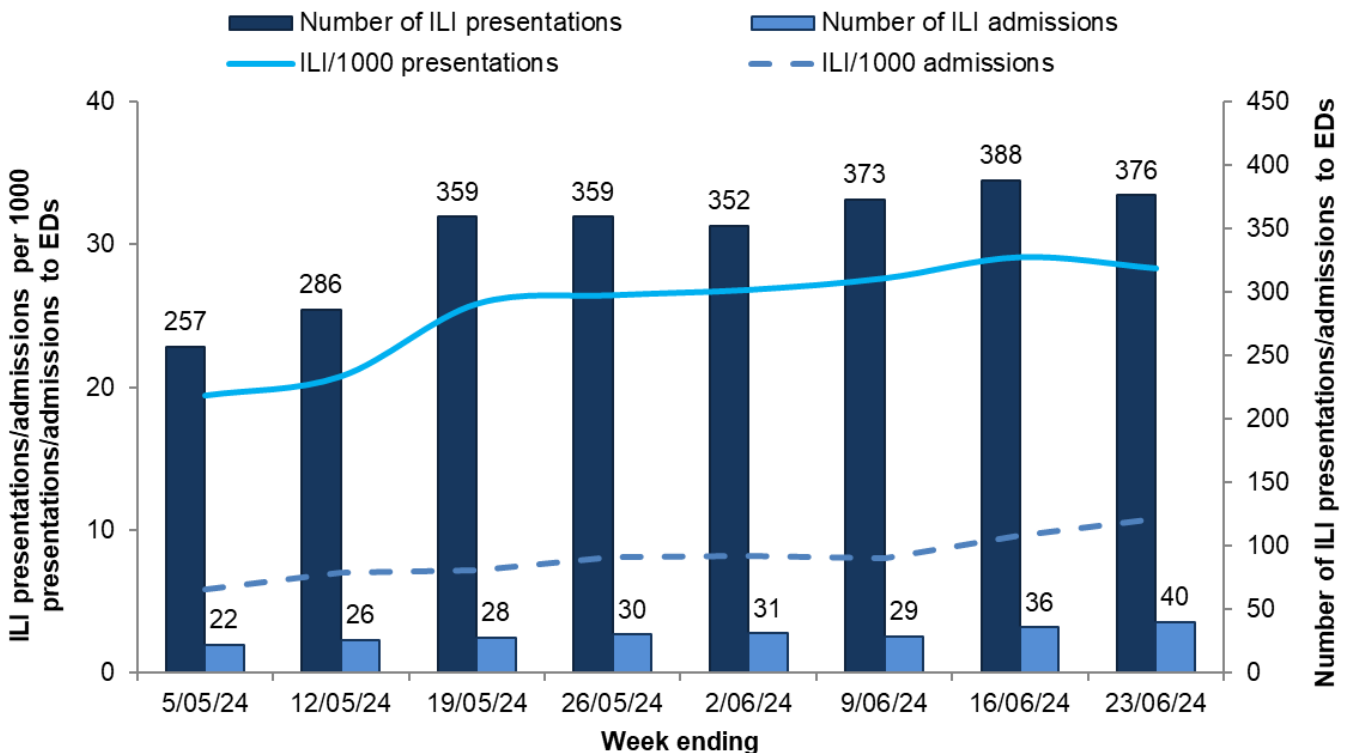
The rate of ILI presentations to sentinel GPs decreased to the lower range of values usually reported at this time of year (Figure 1).

**Figure 1. Rate of ILI per 1000 consultations at sentinel GPs (Australian Sentinel Practices Research Network) by week, WA, 2019 to 2024 YTD**



The rate of ILI-related presentations EDs decreased in the past week, while the rate of admissions increased (Figure 2).

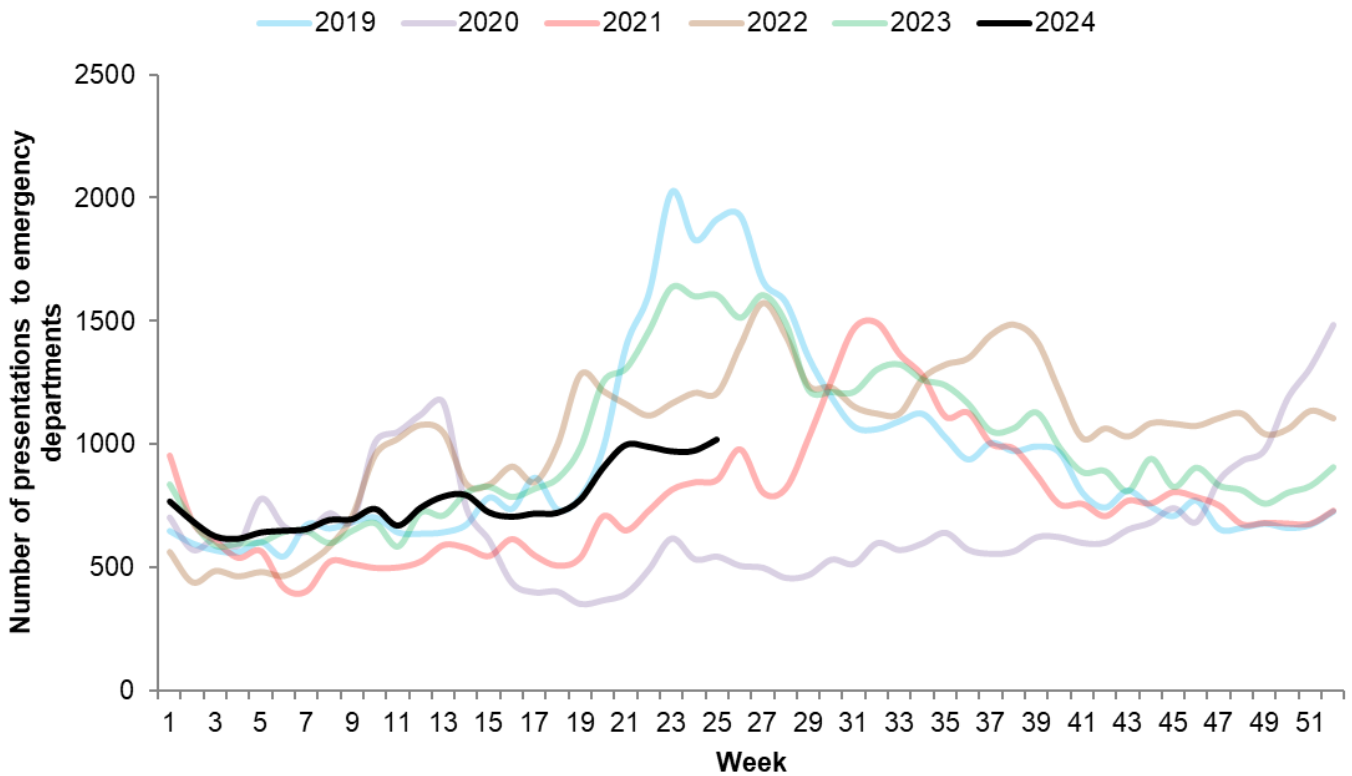
**Figure 2. Number and rate of ILI presentations/admissions to emergency departments in the past eight weeks, WA**



Note: This graph is a count of current EDIS data using the ICD codes B34.9 and J06.9, which are consistent with a clinical presentation of influenza-like illness. This data may differ from that presented in the Winter Respiratory Illness Report provided by the Information and System Performance Directorate, DoH.

In the past week, the number of respiratory illness presentations to EDs increased but remained in the mid-range of values usually reported at this time of year (Figure 3).

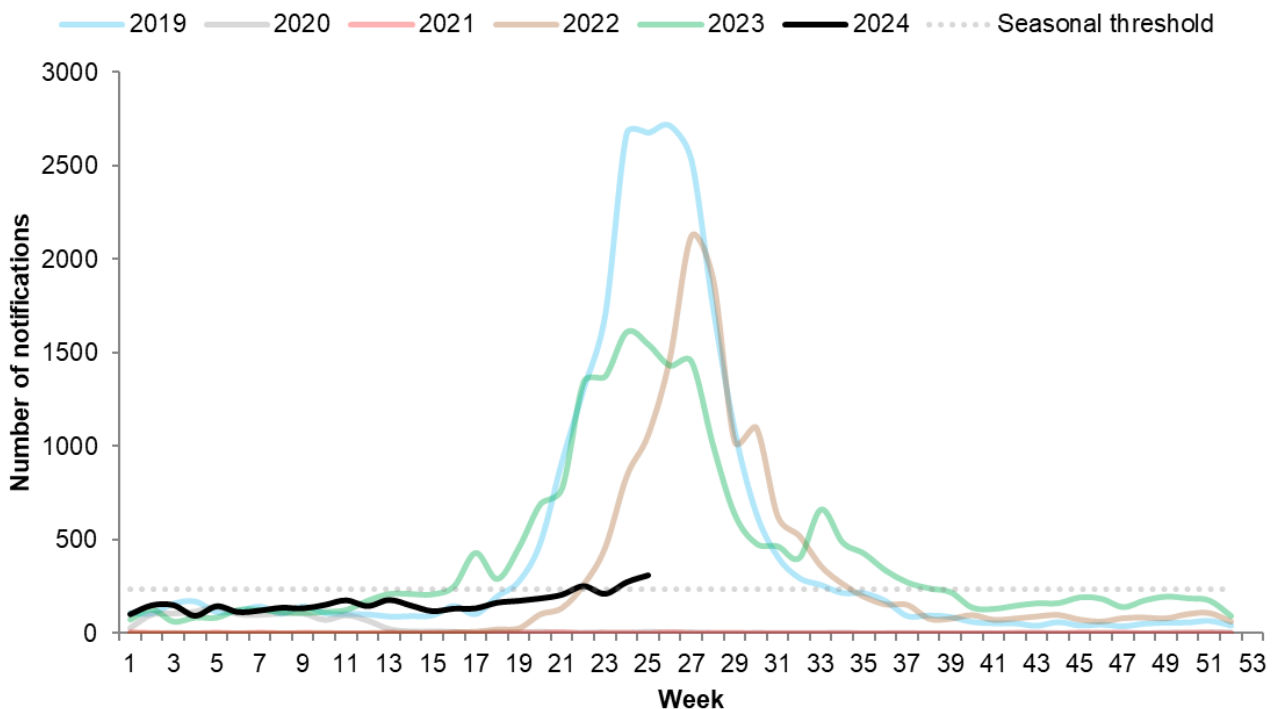
**Figure 3. Number of respiratory illness presentations to emergency departments by week, WA, 2019 to 2024 YTD**



Note: This graph is a count of current EDIS data using the ICD codes B34.9, H66.9, J00, J06.9, J09.0, J10.0, J10.1, J10.8, J11.0, J11.1, J11.8, J12.9, J18.0, J18.1, J18.8, J18.9, J20.9, J21.9, J22, J40, J44.0, J44.1, J44.9, J45.9, J46.0, J98.8, J98.9, R05 and COVID-19 code U07.1, which are consistent with a clinical presentation of all respiratory-like illness. This data is different to Figure 2 but similar to that presented in the Winter Respiratory Illness Report provided by the Information and System Performance Directorate, DoH.

In the past week the number of influenza cases notified to the Department of Health increased by 14% to 309 cases, remaining above the seasonal threshold (Figure 4).

**Figure 4. Number of influenza notifications by week, WA, 2019 to 2024 YTD**



Note: This graph is a count of all influenza notifications by week of receipt by the DoH, WA (through WANIDD) to the end of the current reporting week. The seasonal threshold defines a value above which may indicate seasonal influenza activity. The threshold value is calculated based on analysis of inter-seasonal influenza data from 2016 to 2019 and 2023.

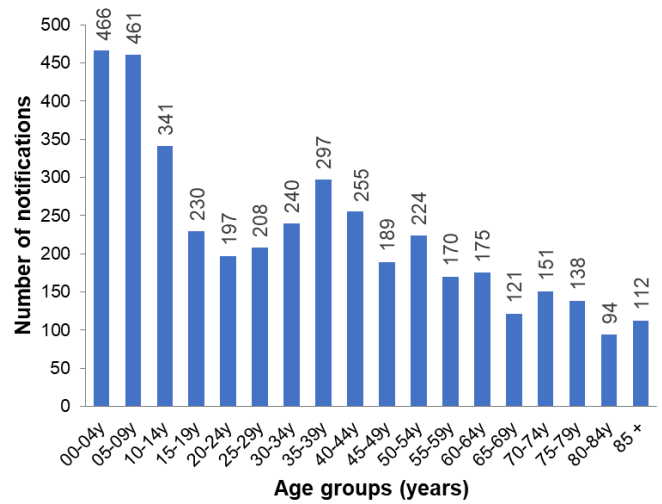
In the year to date, the number of influenza notifications, hospitalisations, and deaths\* were lower than the previous five-year average (Table 1). Thirty-one percent of notifications were in those aged less than 15 years (Figure 5).

**Table 1. Influenza notifications and vaccination coverage, WA, 2024 YTD compared to the 5-year average for the same period**

Notifications		2024 Year to Date	5 yr average
Influenza infections extracted by date of receipt	Notifications	4,069	4,966
	Hospitalisations	803	935
	Reported Deaths	6	18
Vaccinations		2024 Year to Date	5 yr average
Influenza immunisations administered	Age group		
	6mo-< 5 yrs	27,142	NA
	5-64 yrs	414,441	NA
	≥ 65 yrs	284,036	NA
Total		725,619	NA

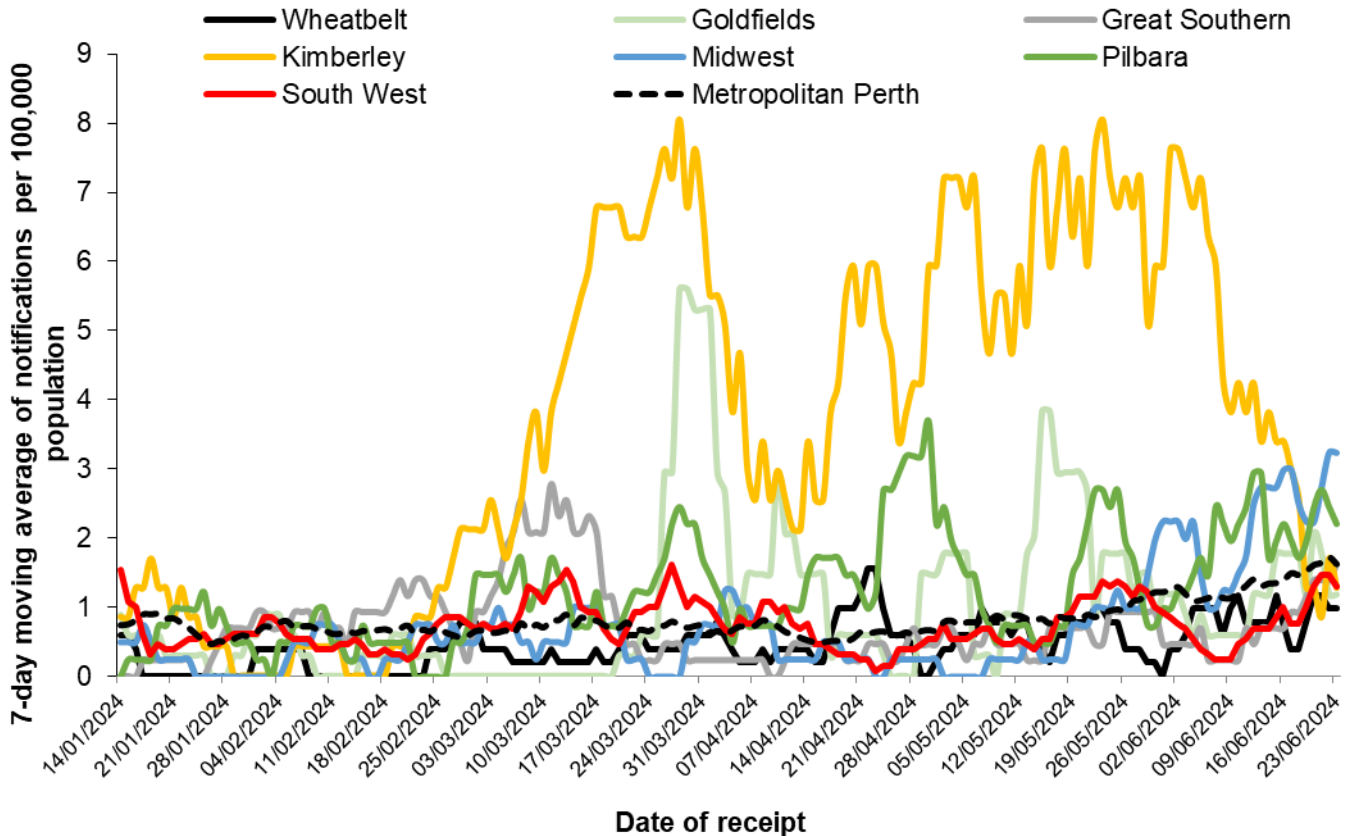
Note: NA: data not available. Note: 5-year average is calculated using the years 2016-2019 and 2023. Notification data source: WANIDD. Immunisation data source: Department of Health and Aged Care [Influenza \(flu\) immunisation data](#) | Australian Government Department of Health and Aged Care. Doses administered from 1 March. \* Reported deaths may include historical deaths that occurred prior to the current reporting period.

**Figure 5. Influenza notifications by age group, WA, 2024 YTD**



In the past week, the seven-day moving average for influenza notification rates increased in all regions except for the Goldfields, Kimberley and Pilbara regions where the rates either decreased or remained stable (Figure 6).

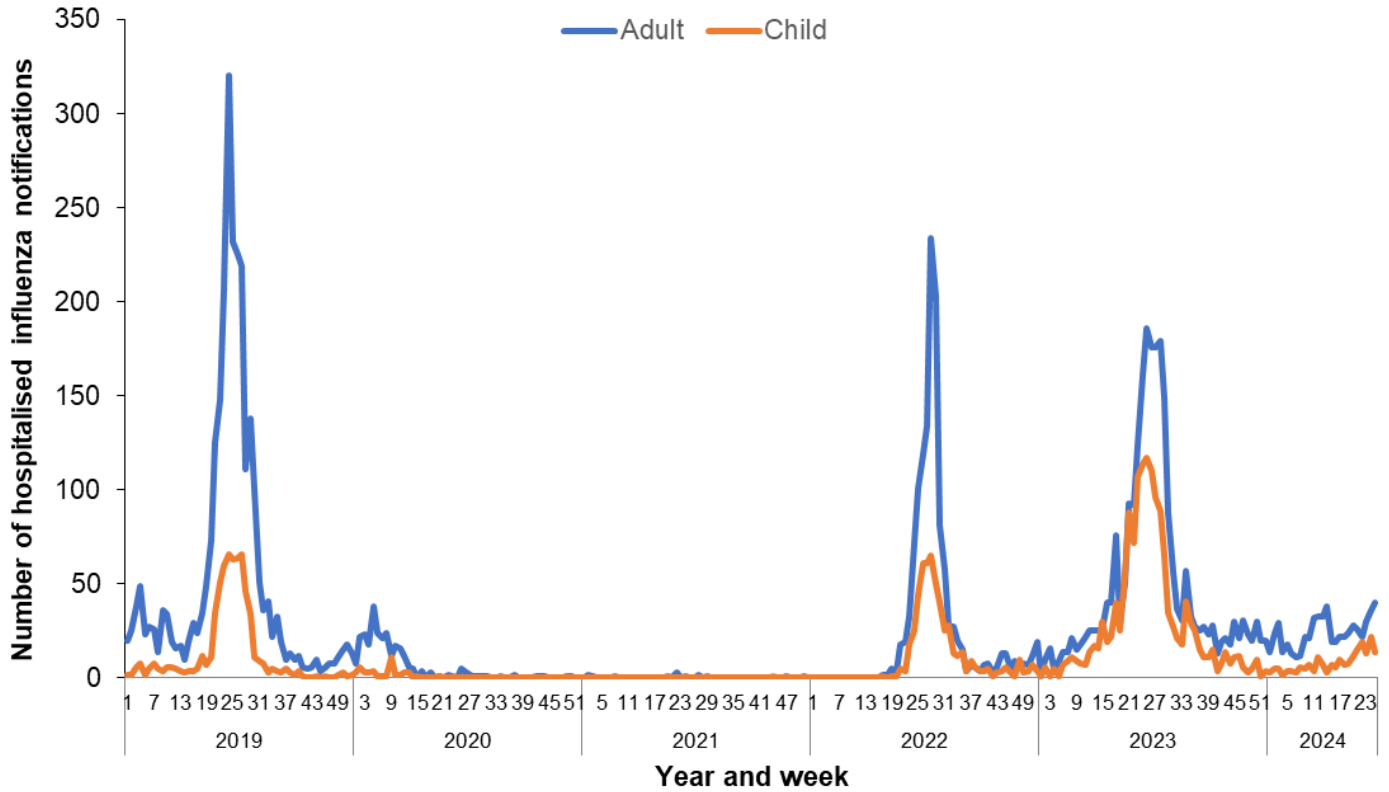
**Figure 6. 7-day moving average of influenza notification rates per 100,000 people by health region, WA, 2024 YTD**



Note: This graph shows the 7-day moving average of influenza cases per 100,000 people in the WA health regions for 2024 by date of receipt, received by the DoH, WA (through WANIDD) to the end of the current reporting week.

The number of influenza cases reported as hospitalised in the past week increased in adults and decreased in children (Figure 7).

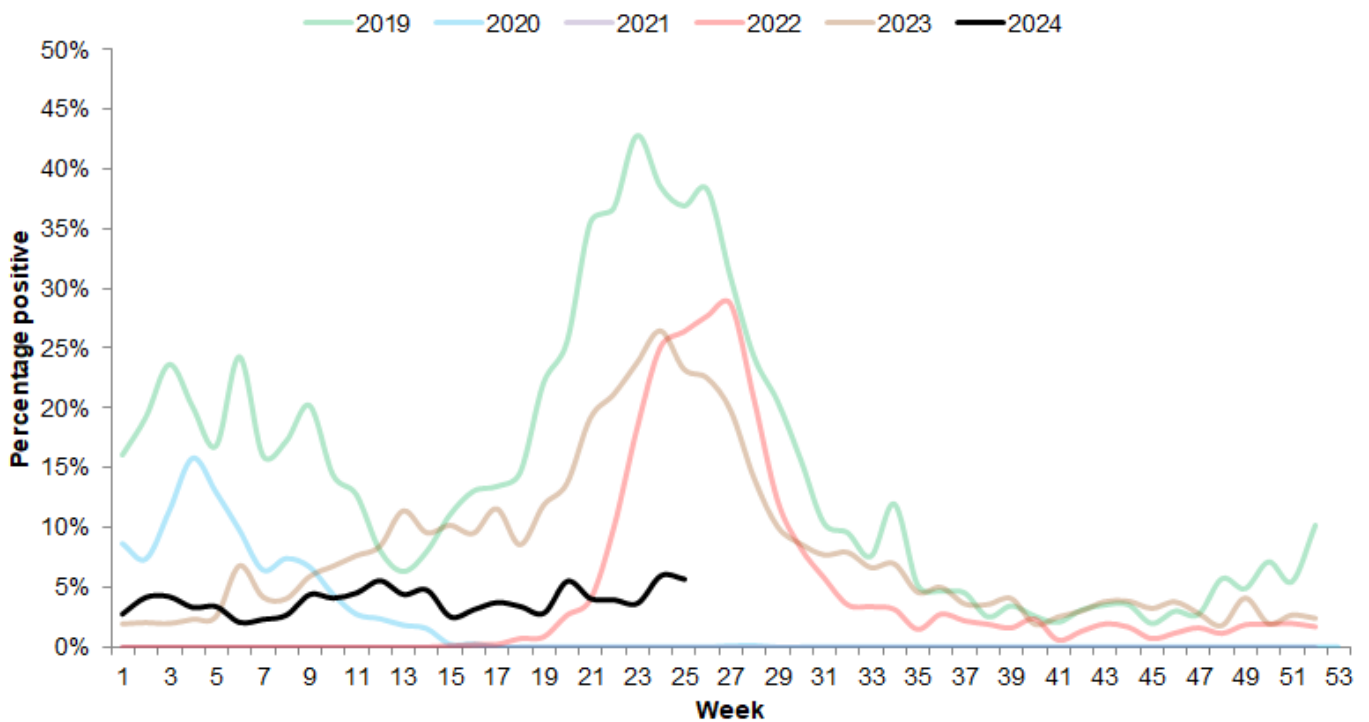
**Figure 7. Number of notified influenza cases hospitalised by week, WA, 2019 to 2024 YTD**



Note: This graph shows the number of all notified influenza cases that have been hospitalised, by week of notification receipt, received by the DoH, WA (through WANIDD) to the end of the current reporting week. Child notifications were defined as individuals less than 18 years of age.

The influenza PCR test positivity at PathWest decreased to 5.7% (75 detections) in the past week. (Figure 8).

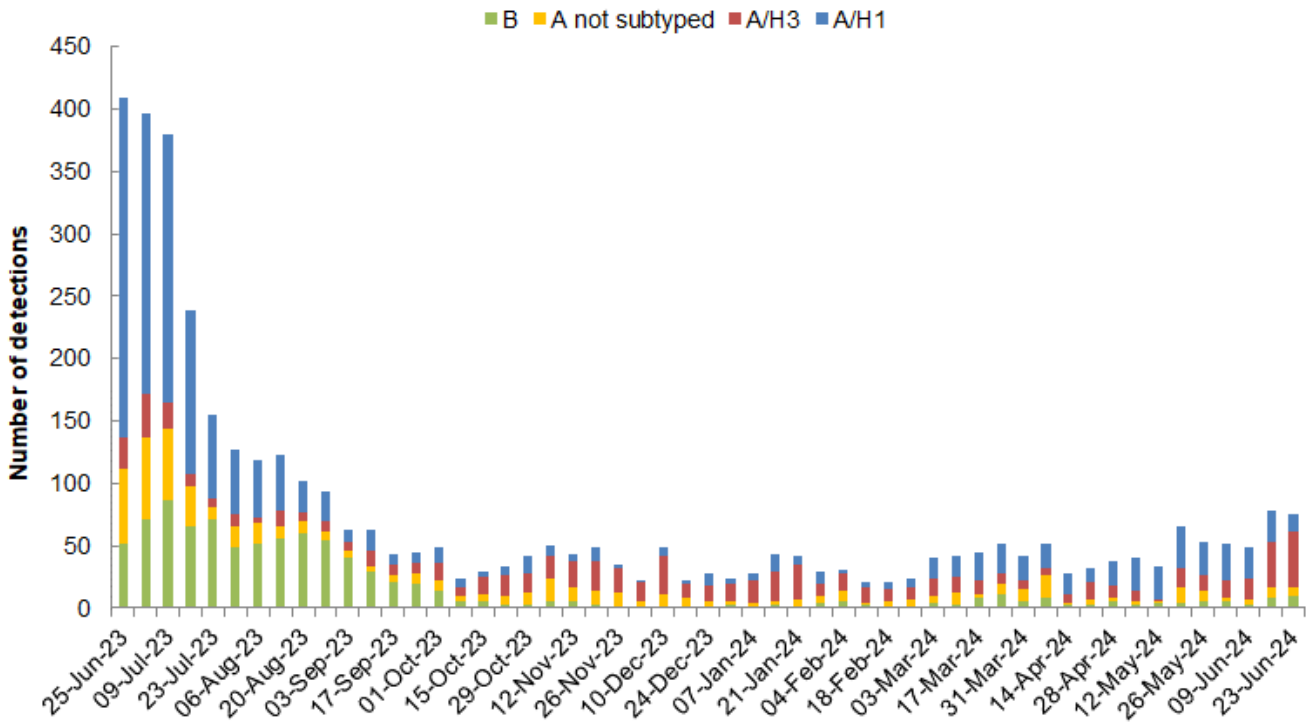
**Figure 8. Proportion of PCR positive influenza detections at PathWest by week, WA, 2019 to 2024 YTD**



Note: This graph is a count of all WA samples reported by PathWest, excluding samples referred by other private laboratories for influenza subtyping.

PathWest reported 75 influenza detections in the past week, which included 14 A/H1, 45 A/H3, 6 influenza A not yet subtyped and 10 influenza B (Figure 9).

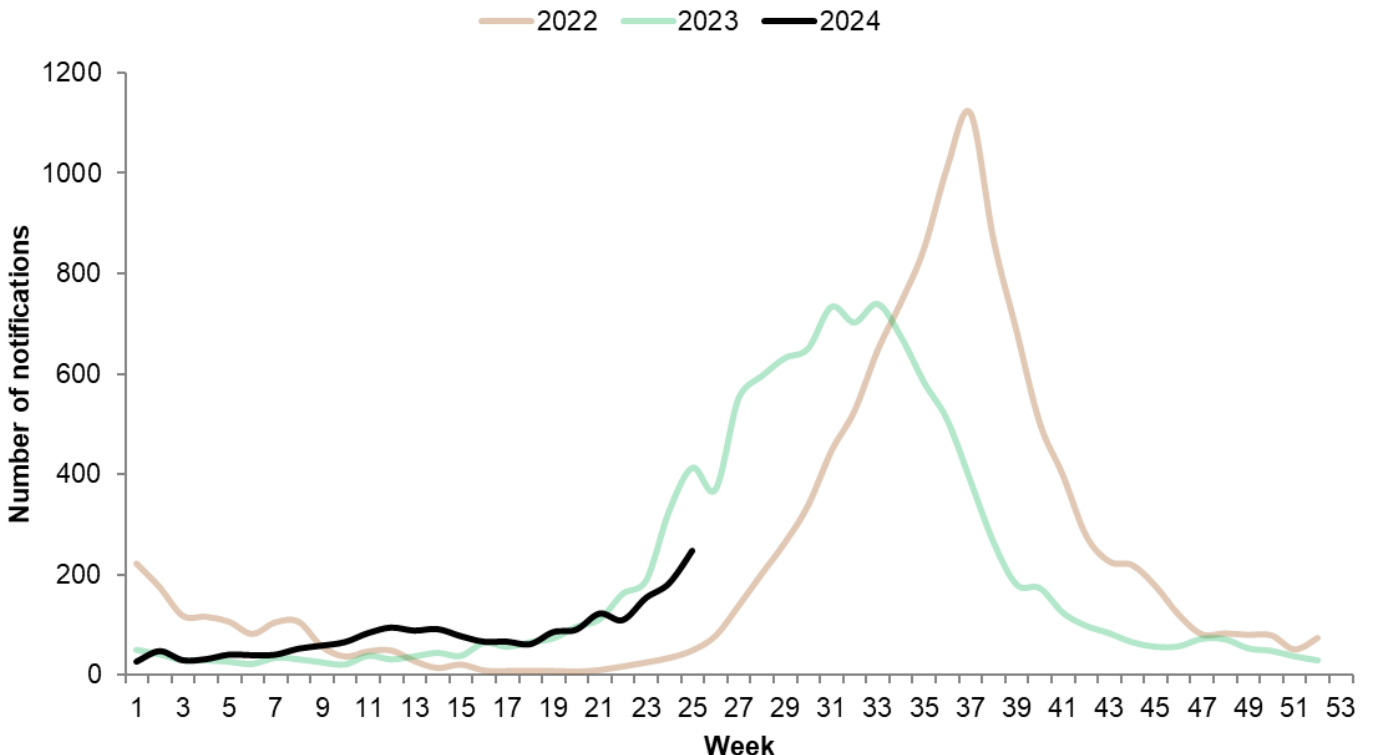
**Figure 9. Number of PCR positive influenza detections at PathWest by type, subtype and week, WA, 2023 to 2024 YTD**



Note: The graph is a summary of all WA samples positive for influenza reported at PathWest, excluding samples referred by other private laboratories for influenza subtyping. These samples were tested using a rapid testing method that does not determine the influenza subtype (i.e., influenza A/H3N2 or A/H1).

There has been a gradual upward trend in the number of respiratory syncytial virus (RSV) cases notified to the Department of Health; cases increased by 36% to 248 cases last week (Figure 10).

**Figure 10. Number of respiratory syncytial virus (RSV) notifications by week, WA, 2022 to 2024 YTD**



Note: Respiratory syncytial virus (RSV) was made a notifiable infectious disease in WA in July 2021. This graph is a count of all RSV by week of onset by the DoH, WA (through WANIDD) to the end of the current reporting week.

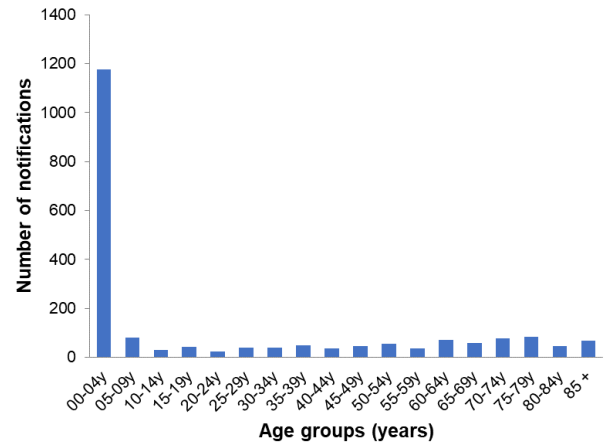
In the year to date, the number of RSV notifications, hospitalisations, and deaths\* were higher than in the same period in 2023. To date, 14,389 infants have received a dose of RSV immunisation (Table 2). Notifications were highest in those aged less than 5 years (Figure 11).

**Table 2. RSV notifications and infant immunisation coverage, WA, 2024 YTD compared to 2023 for the same period**

Notifications	Category	2024 Year to Date	2023
RSV infections extracted by optimal date of onset	Notifications	2,066	1,647
	Hospitalisations	650	569
	Reported Deaths	4	1
Number of infants receiving a dose of RSV immunisation		2024 Year to Date	2023
Persons		14,389	N/A

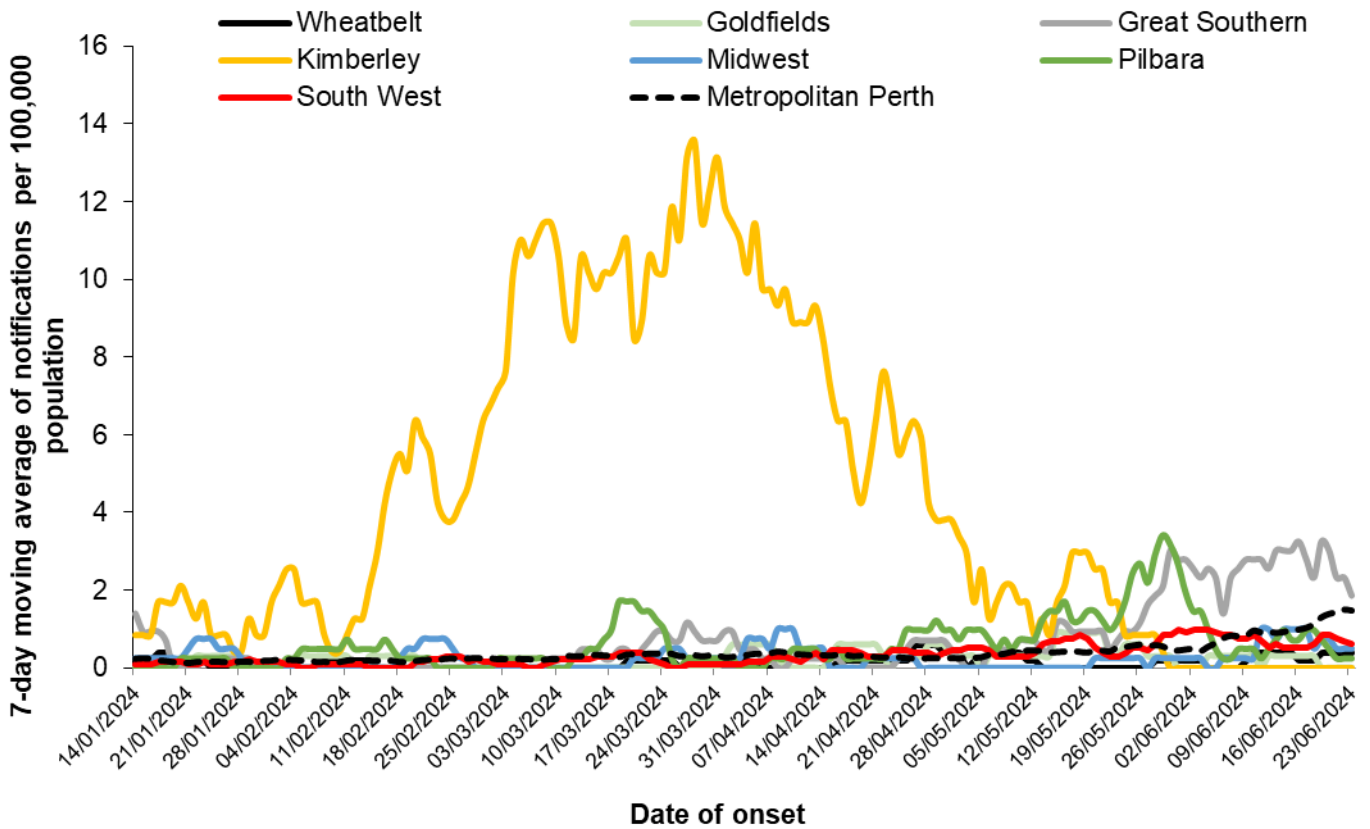
Note: N/A: data not available. Notification data source: WANIDD. Immunisation data source: Australian Immunisation Register accessed by WA Department of Health. Immunisation data does not include adult doses of RSV containing vaccine. \* Reported deaths may include historical deaths that occurred prior to the current reporting period.

**Figure 11. RSV notifications by age group, WA, 2024 YTD**



In the past week, the seven-day moving average for RSV notification rates decreased or remained stable in all regions, except the Metro, South West and Wheatbelt regions where rates increased (Figure 12).

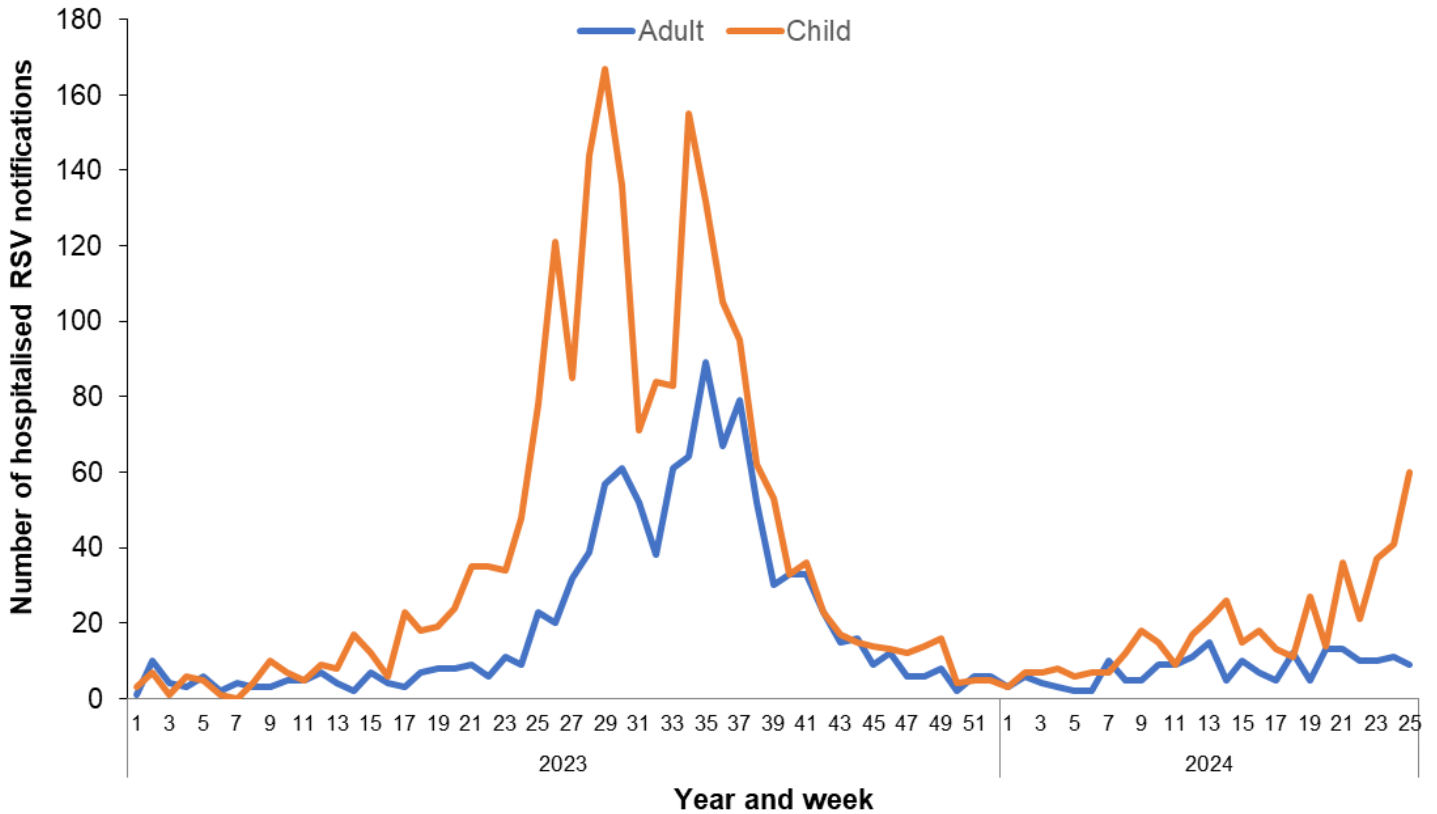
**Figure 12. 7-day moving average of RSV notification rates per 100,000 people by health region, WA, 2024 YTD**



Note: This graph shows the 7-day moving average of RSV cases per 100,000 people in the WA health regions for 2024 by optimal date of onset, received by the DoH, WA (through WANIDD) to the end of the current reporting week.

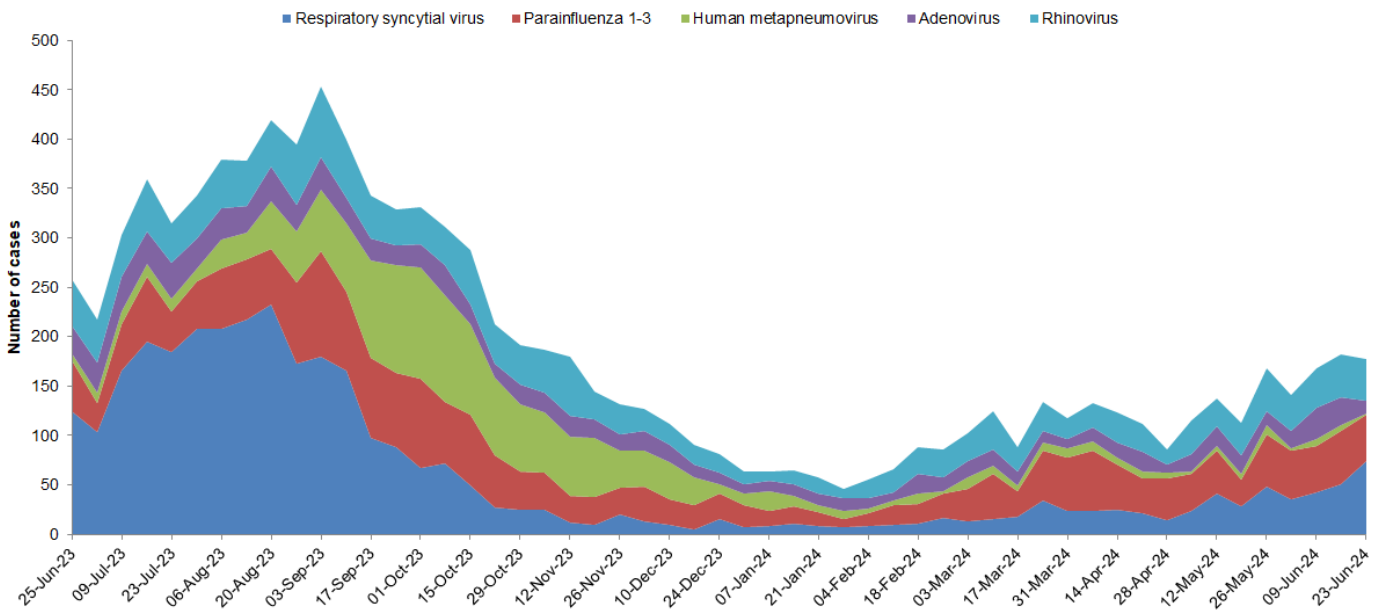
The number of RSV cases reported as hospitalised in the past week increased in children and decreased slightly in adults. (Figure 13).

**Figure 13. Number of notified RSV cases hospitalised by week, WA, 2023 to 2024 YTD**



Non-influenza respiratory virus detections at PathWest decreased in the past week (Figure 14). The most common non-influenza respiratory virus detected was RSV (74 cases).

**Figure 14. Number of non-influenza respiratory virus detections at PathWest by week, WA, 2023 to 2024 YTD**

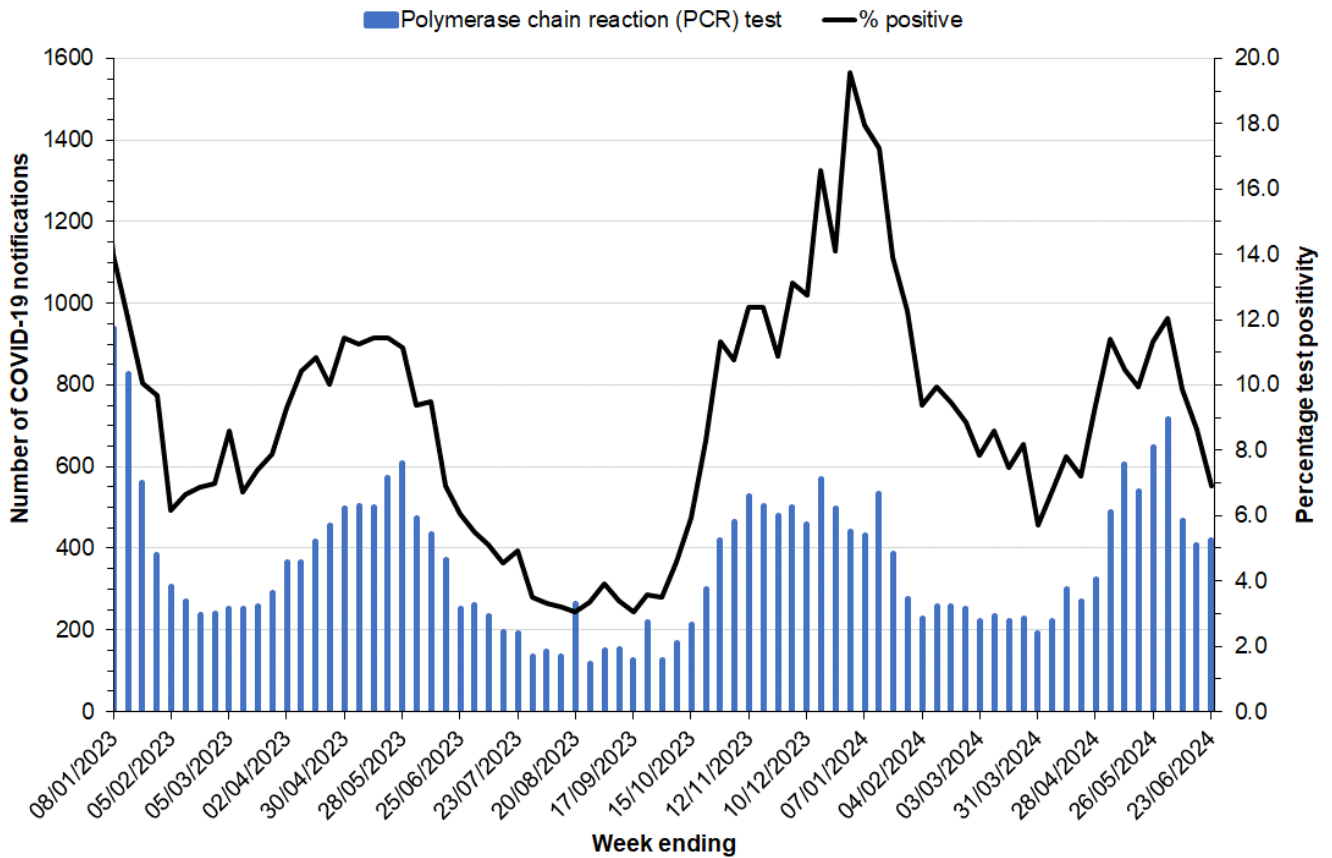


Note: This graph is a count of all WA samples positive for a common respiratory virus other than influenza reported by PathWest.



In the past week, 420 COVID-19 PCR positive cases were notified in WA, an increase of 3% in comparison to the previous week. (Figure 15).

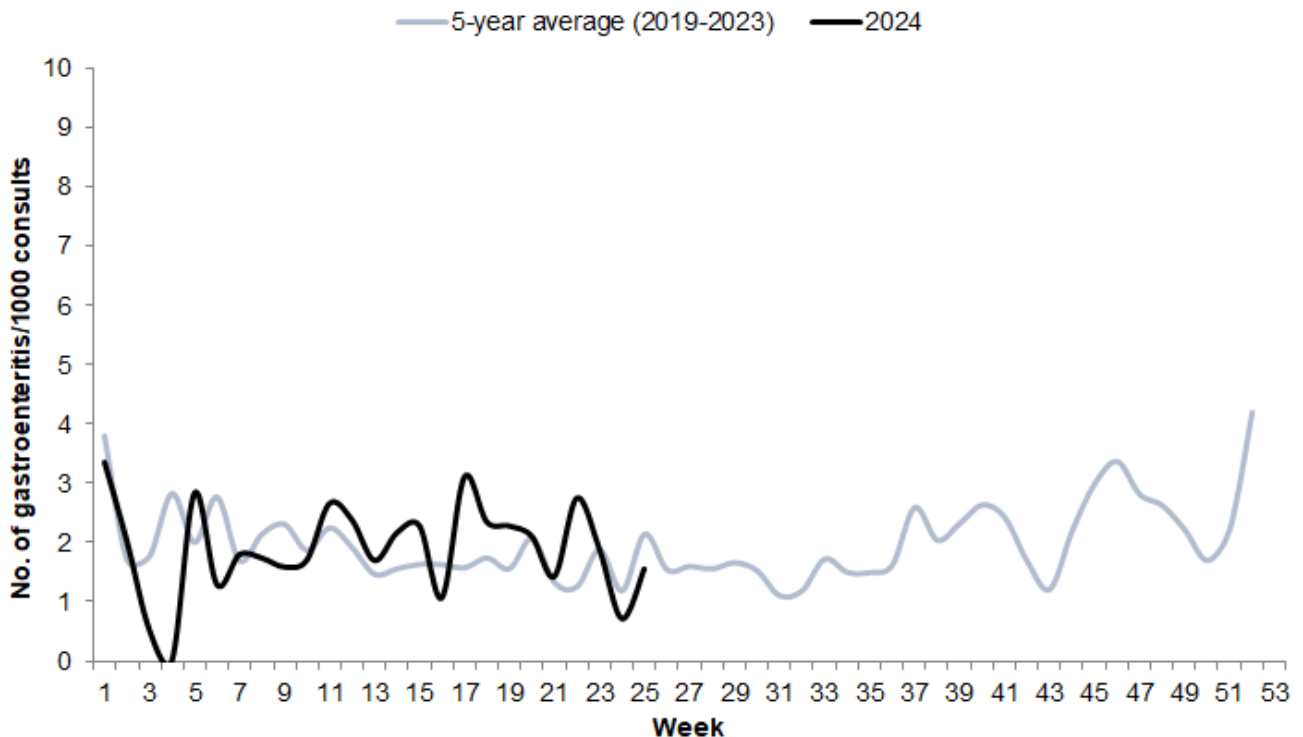
Figure 15. COVID-19 cases and test positivity by notification week, WA, 08 January 2023 to 23 June 2024



## Gastroenteritis

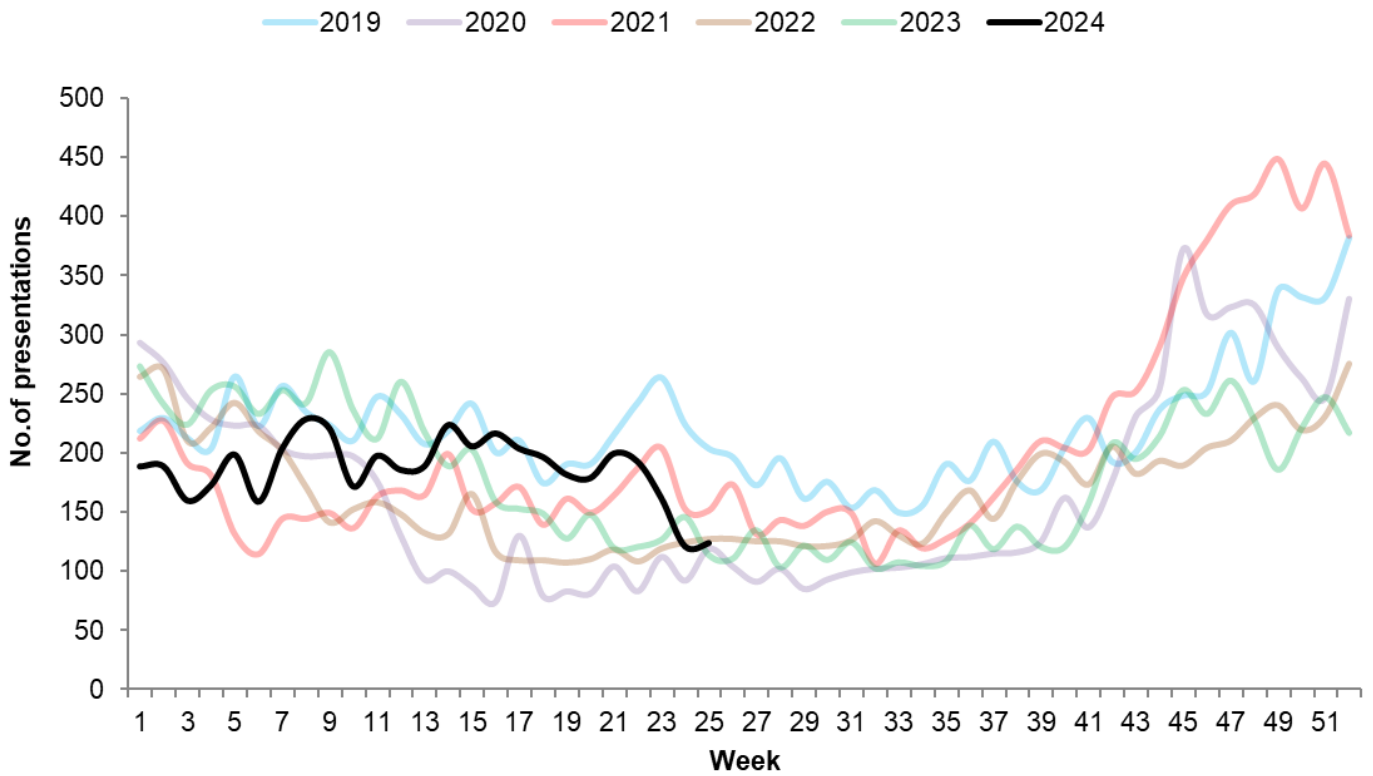
The rate of gastroenteritis presentations to sentinel GPs increased but remained below the baseline in the past week (Figure 16).

Figure 16. Number of gastroenteritis presentations per 1000 consultations at sentinel GPs (Australian Sentinel Practices Research Network) by week, WA, 2019 to 2024 YTD



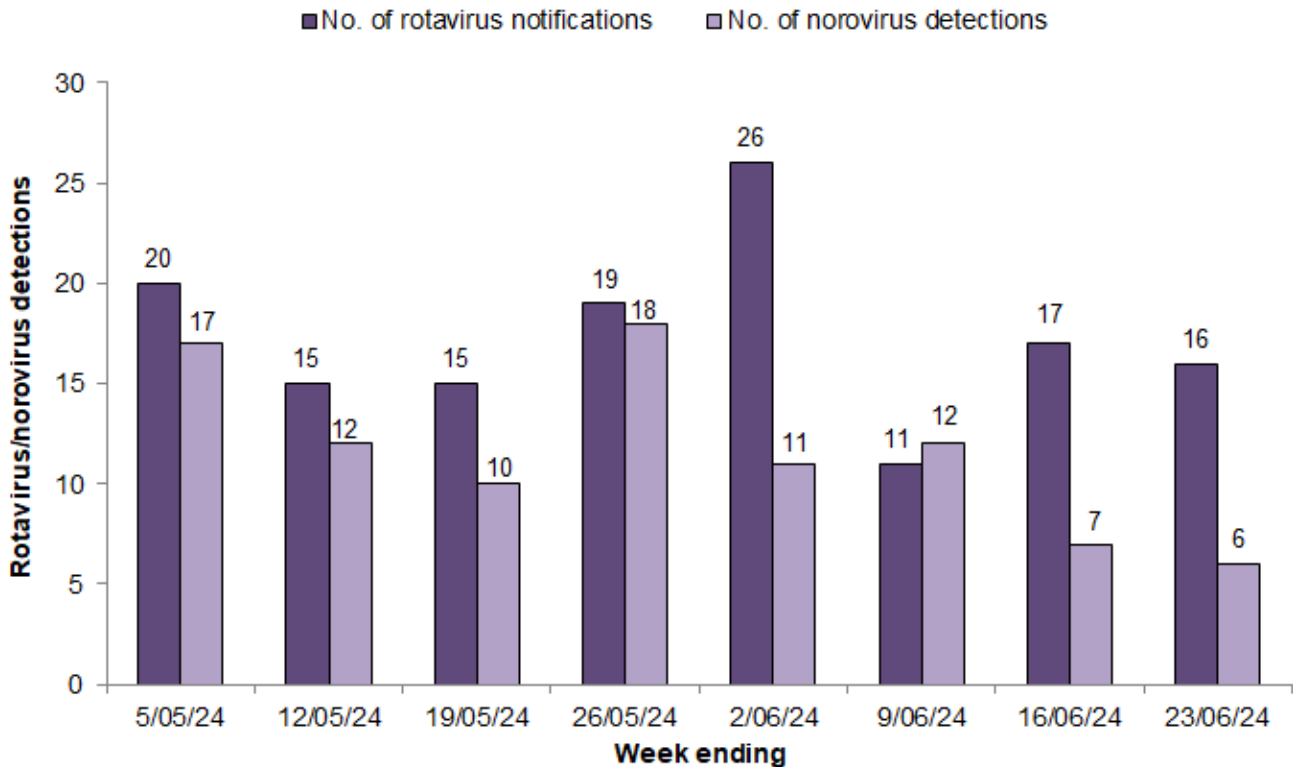
Gastroenteritis presentations at EDs increased in the past week but were in the lower range of values usually reported at this time of year (Figure 17).

Figure 17. Number of gastroenteritis presentations to Emergency Departments by week, WA, 2019 to 2024 YTD



In the past week, statewide rotavirus notifications to the Department of Health and norovirus detections at PathWest remained stable (Figure 18).

Figure 18. Number of rotavirus notifications to the Department of Health and norovirus detections at PathWest in the past eight weeks, WA

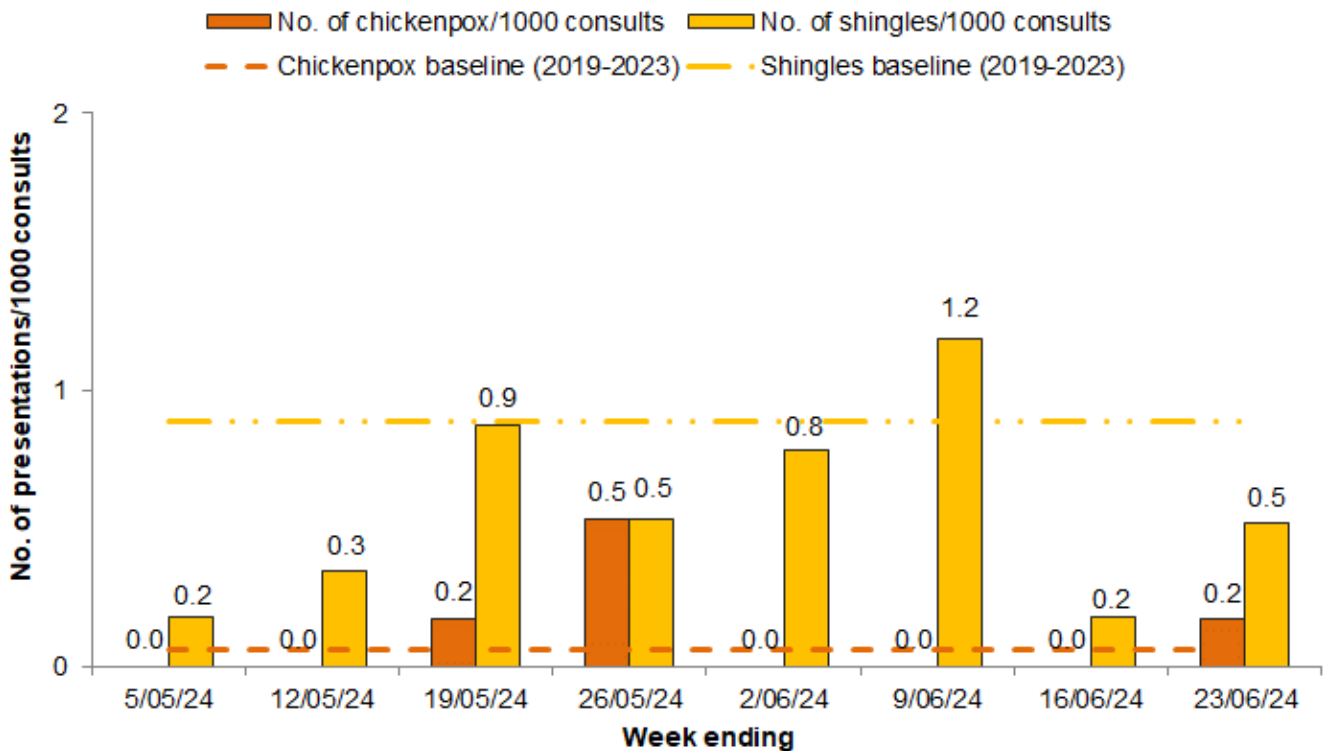


Note: Rotavirus notifications reported to the Department of Health include detections from all WA pathology laboratories. Norovirus detections are from PathWest only.

## Viral rashes

There was one chickenpox presentation to sentinel GPs in the past week and the rate of shingles presentations increased but remained below the baseline (Figure 19).

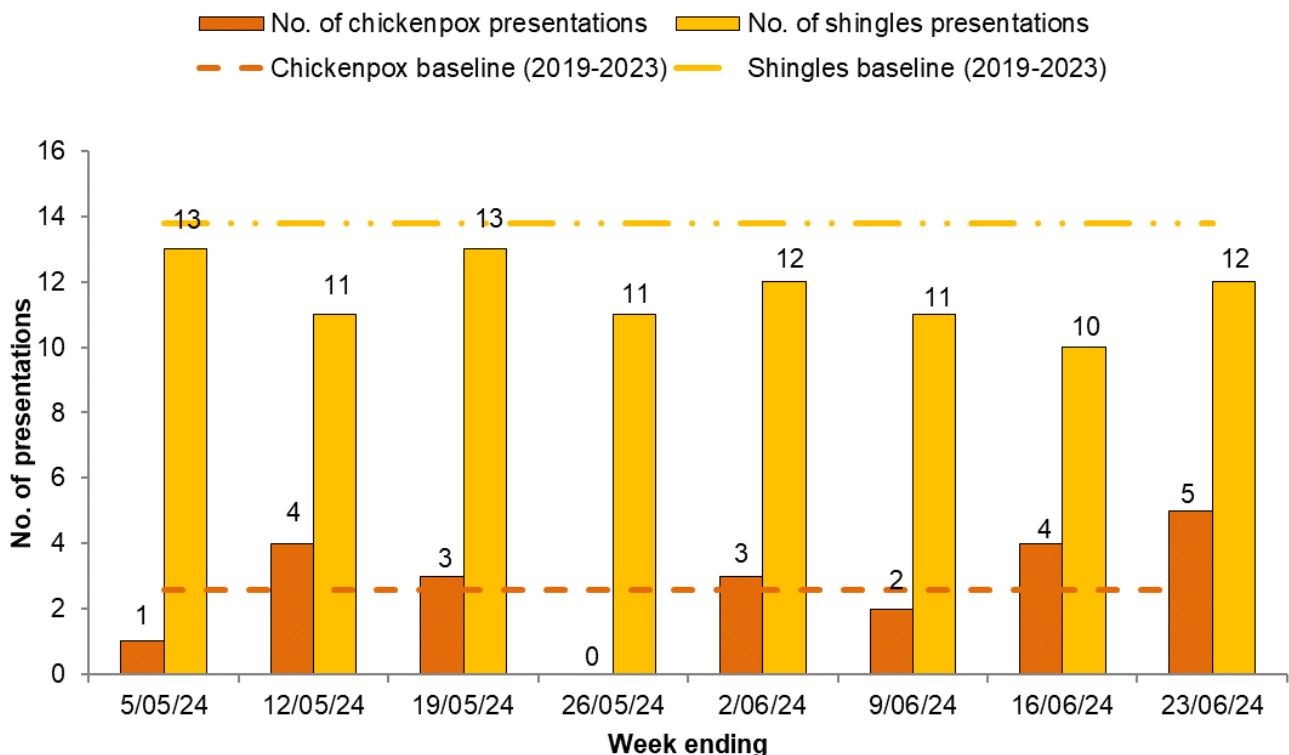
**Figure 19. Number of varicella-zoster presentations per 1000 consultations at sentinel GPs (Australian Sentinel Practices Research Network) in the past eight weeks, WA**



Note: Baseline levels for chickenpox and shingles presentations to WA ASPREN GPs per thousand consultations were calculated using the mean of weekly WA ASPREN data from week 1, 2019 to week 52, 2023.

The number of chickenpox and shingles presentations to EDs increased slightly in the past week (Figure 20).

**Figure 20. Number of varicella-zoster presentations to Emergency Departments in the past eight weeks, WA**



Note: Baseline levels for varicella-zoster virus presentations to Emergency Departments in WA were calculated using the mean of weekly EDIS data from week 1, 2019 to week 52, 2023.

## Report Notes

Virus WAtch is a weekly electronic publication by the Communicable Disease Control Directorate (CDCD) and key collaborators. It provides a brief summary of general practice and hospital emergency department sentinel surveillance data on influenza-like illness, gastroenteritis, and varicella-zoster disease, together with relevant laboratory information, to alert health care workers in WA about important circulating viruses. All figures and data were accurate at time of publication, but subject to change. Please note that the influenza and ILI surveillance systems in Western Australia (WA) have been impacted by the COVID-19 pandemic. Therefore, respiratory viral activity should be interpreted with caution and take into account the effects of changes in health seeking behaviour including accessing alternate health services such as telehealth, focused testing for COVID-19 at COVID-19 clinics or specific acute respiratory infection clinics, increased testing for other respiratory viruses and the impact of international border closures. The data collections used to create this publication include:

- Sentinel general practice (GP) data collected by WA members of the Australian Sentinel Practices Research Network (ASPREN).
- Emergency Department (ED) data provided by the Emergency Department Information System (EDIS), which currently incorporates data from the following hospitals: Fiona Stanley Hospital, Sir Charles Gardiner Hospital, Royal Perth Hospital, Perth Children's Hospital, King Edward Memorial Hospital, St John of God Midland, Bunbury Hospital, Armadale Hospital, Joondalup Health Campus, and Rockingham General Hospital.
- Disease notification data are sourced from the Western Australian Notifiable Infectious Diseases Database (WANIDD). These data are received by CDCD, WA Department of Health from medical providers and public or private laboratories in WA. Hospitalisation data are included in the report during the influenza season.
- Viral laboratory data obtained from PathWest laboratories at QEII Medical Centre, as well as via notification data sent by all WA laboratories to CDCD, WA Department of Health.
- Reported deaths may include historical deaths that occurred prior to the current reporting period.
- As of 1 January 2022, the definition of a confirmed influenza case has changed to remove 'Single high titre by CFT or HAI to influenza virus' from the list of [laboratory definitive evidence](#).
- As of March 2022, this report includes COVID-19 cases diagnosed by Polymerase Chain Reaction (PCR) test and Rapid Antigen Test (RAT) sourced from Public Health Operations COVID-19 Unified System (PHOCUS).
- From 9 October 2023, it is no longer a requirement to register positive COVID-19 rapid antigen test (RAT) results to the WA Department of Health. Therefore, probable COVID-19 cases diagnosed by RAT will not be reported from that date.
- From 14 January 2024, the methodology for calculating the influenza seasonal threshold has changed. The threshold value is calculated based on analysis of inter-seasonal influenza data from 2016 to 2019 and 2023.
- Current and archived issues of Virus Watch [http://ww2.health.wa.gov.au/Articles/F\\_I/Infectious-disease-data/Virus-WAtch](http://ww2.health.wa.gov.au/Articles/F_I/Infectious-disease-data/Virus-WAtch).

**This document can be made available in alternative formats on request for a person with disability.**

© Department of Health 2024

Copyright to this material is vested in the State of Western Australia unless otherwise indicated. Apart from any fair dealing for the purposes of private study, research, criticism, or review, as permitted under the provisions of the *Copyright Act 1968*, no part may be reproduced or re-used for any purposes whatsoever without written permission of the State of Western Australia.

[healthywa.wa.gov.au](http://healthywa.wa.gov.au)