

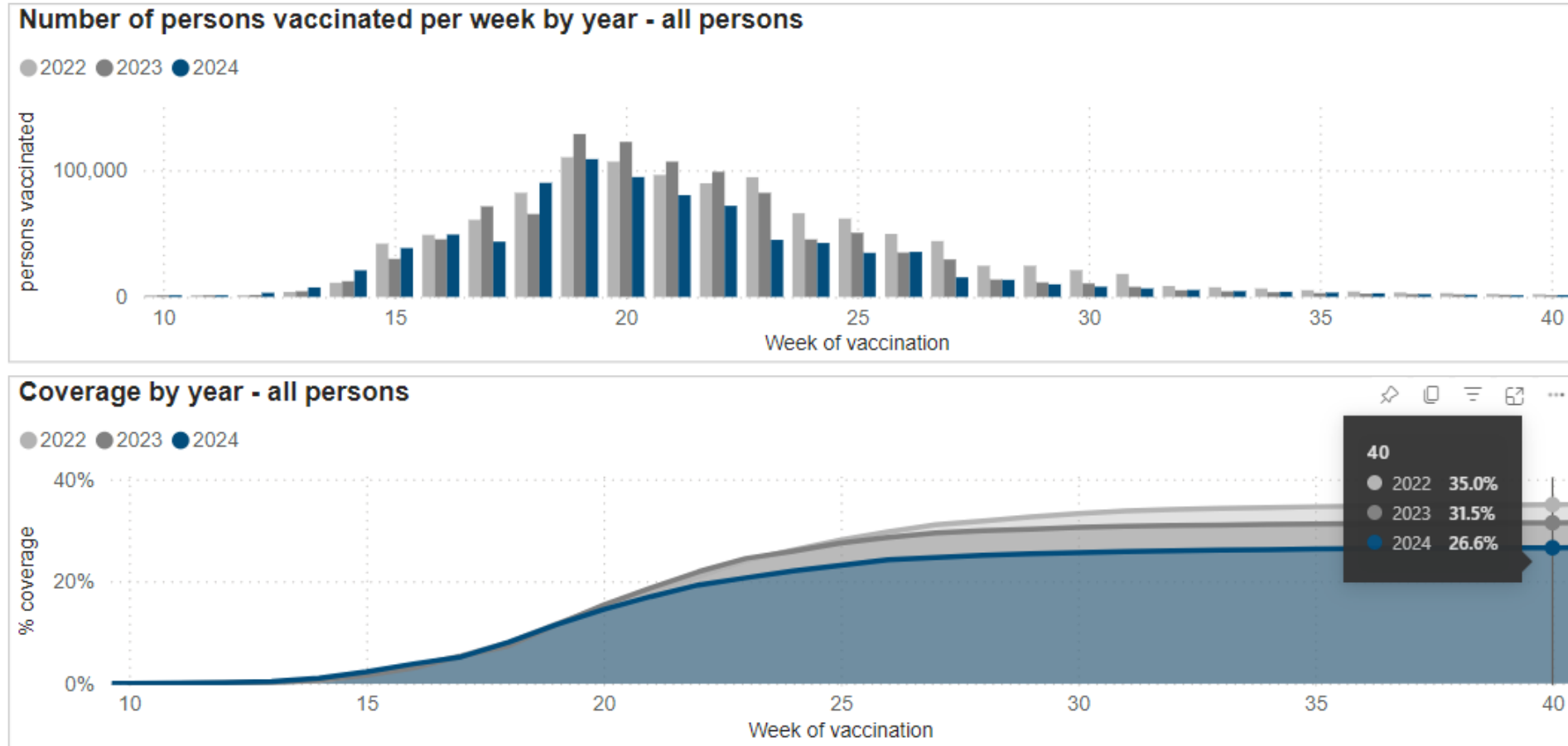


Government of **Western Australia**
Department of **Health**

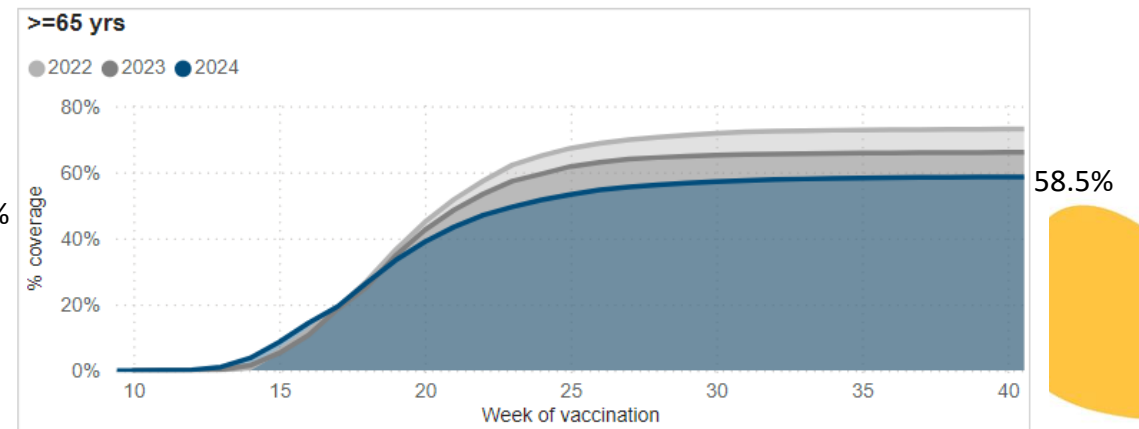
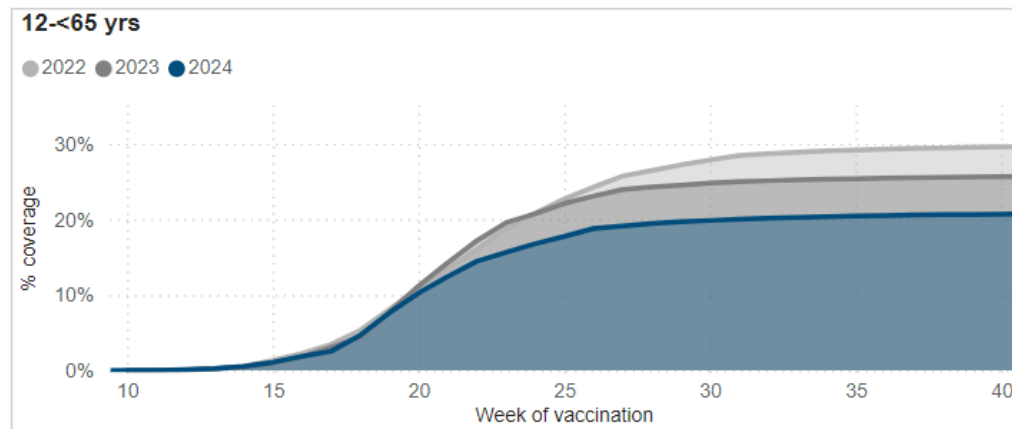
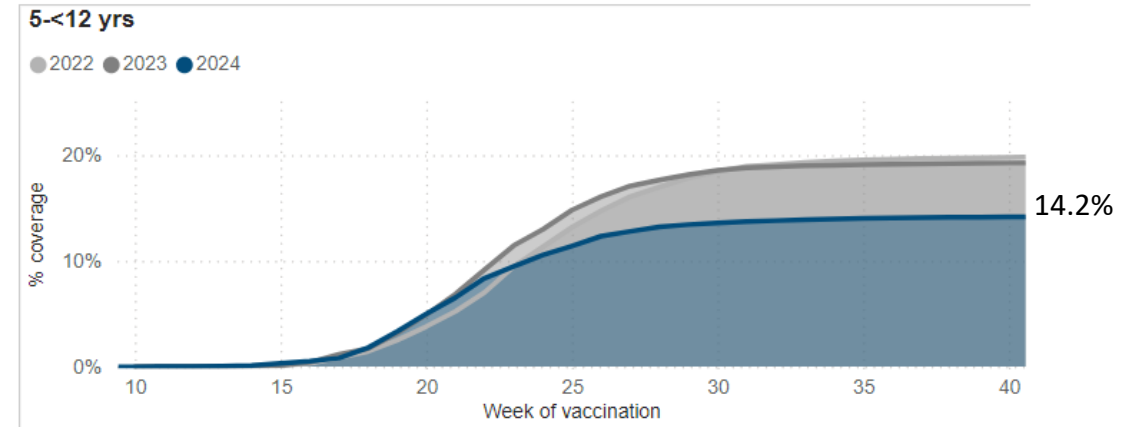
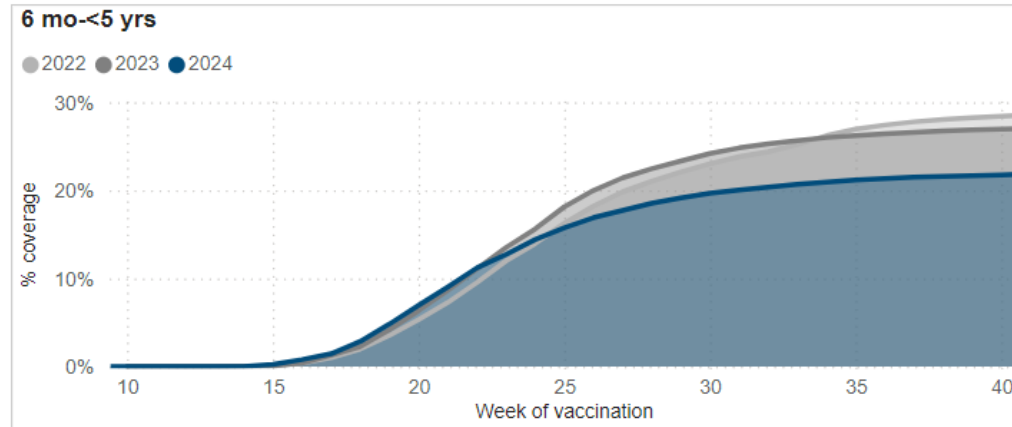
2024 Influenza Vaccination Coverage

Rachel Foong
Senior Epidemiologist
Immunisation Program

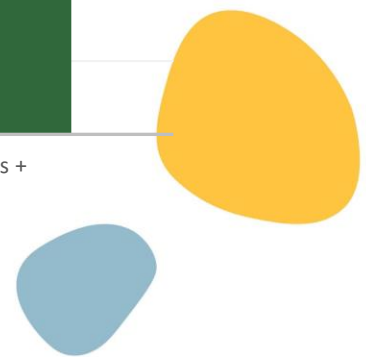
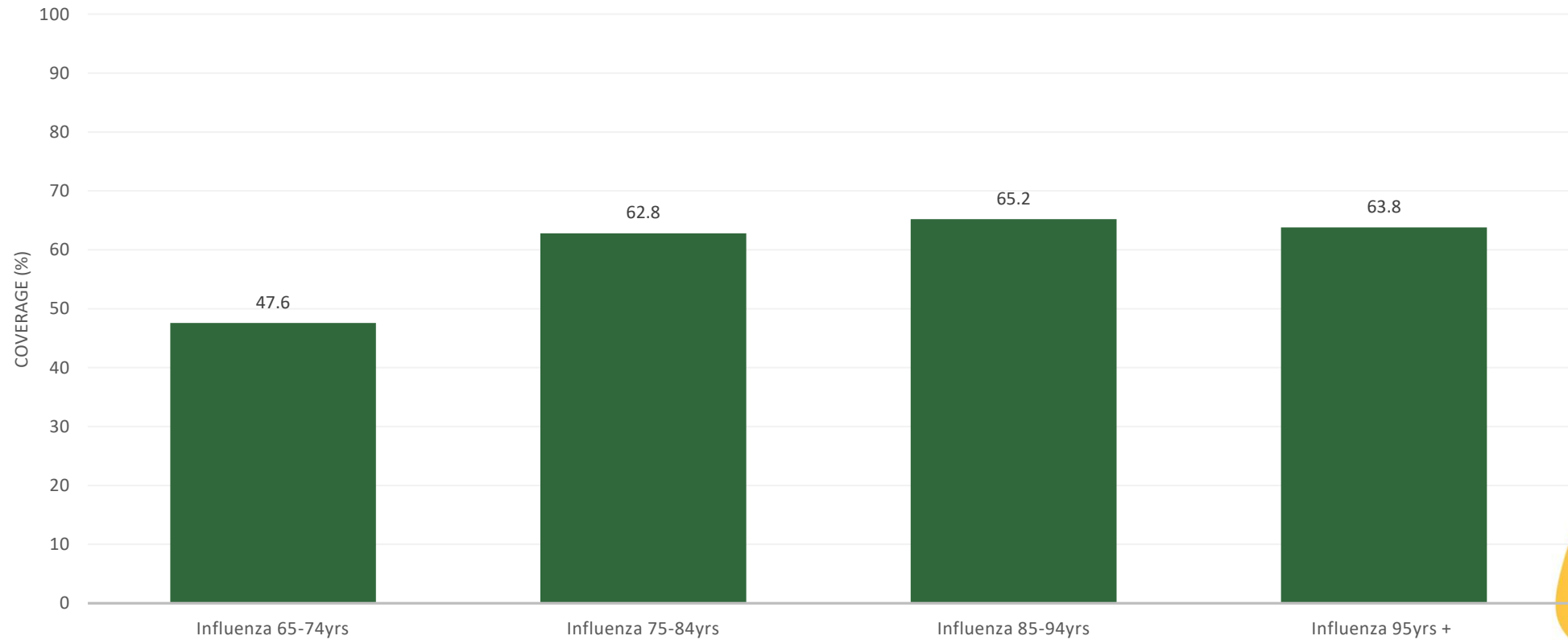
WA Influenza Vaccination Coverage



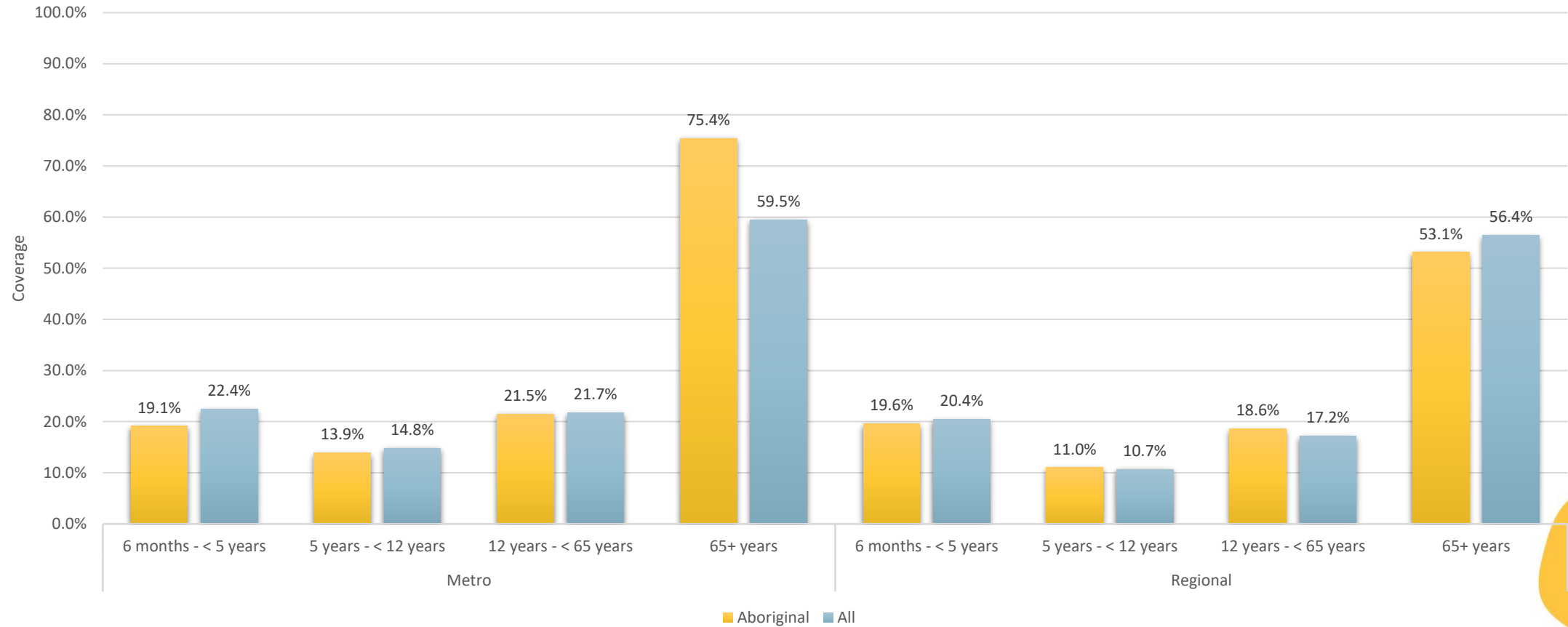
Coverage by age cohort



Coverage in older adults



Coverage by Aboriginal status and Area



National coverage

All people

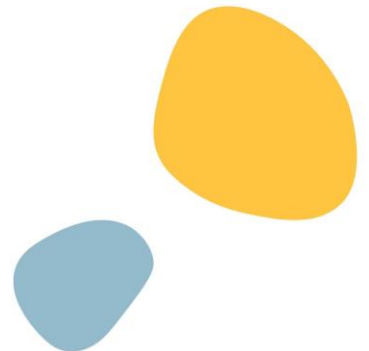
	ACT	NSW	VIC	QLD	SA	WA	TAS	NT	AUS
6 mo - < 5 yrs	47.7	24.5	29.8	22.1	26.9	22.0	29.4	32.6	25.8
5 - < 15 yrs	21.8	13.1	15.0	13.9	14.5	13.1	14.0	13.3	14.0
15 - < 50 yrs	30.5	19.1	23.0	18.7	23.3	17.1	22.7	21.0	20.4
50 - < 65 yrs	42.6	30.8	34.6	32.6	37.1	29.2	39.6	25.2	32.7
≥ 65 yrs	65.2	58.4	61.8	60.8	66.5	58.5	67.7	33.9	60.5

Aboriginal and Torres Strait Islander people

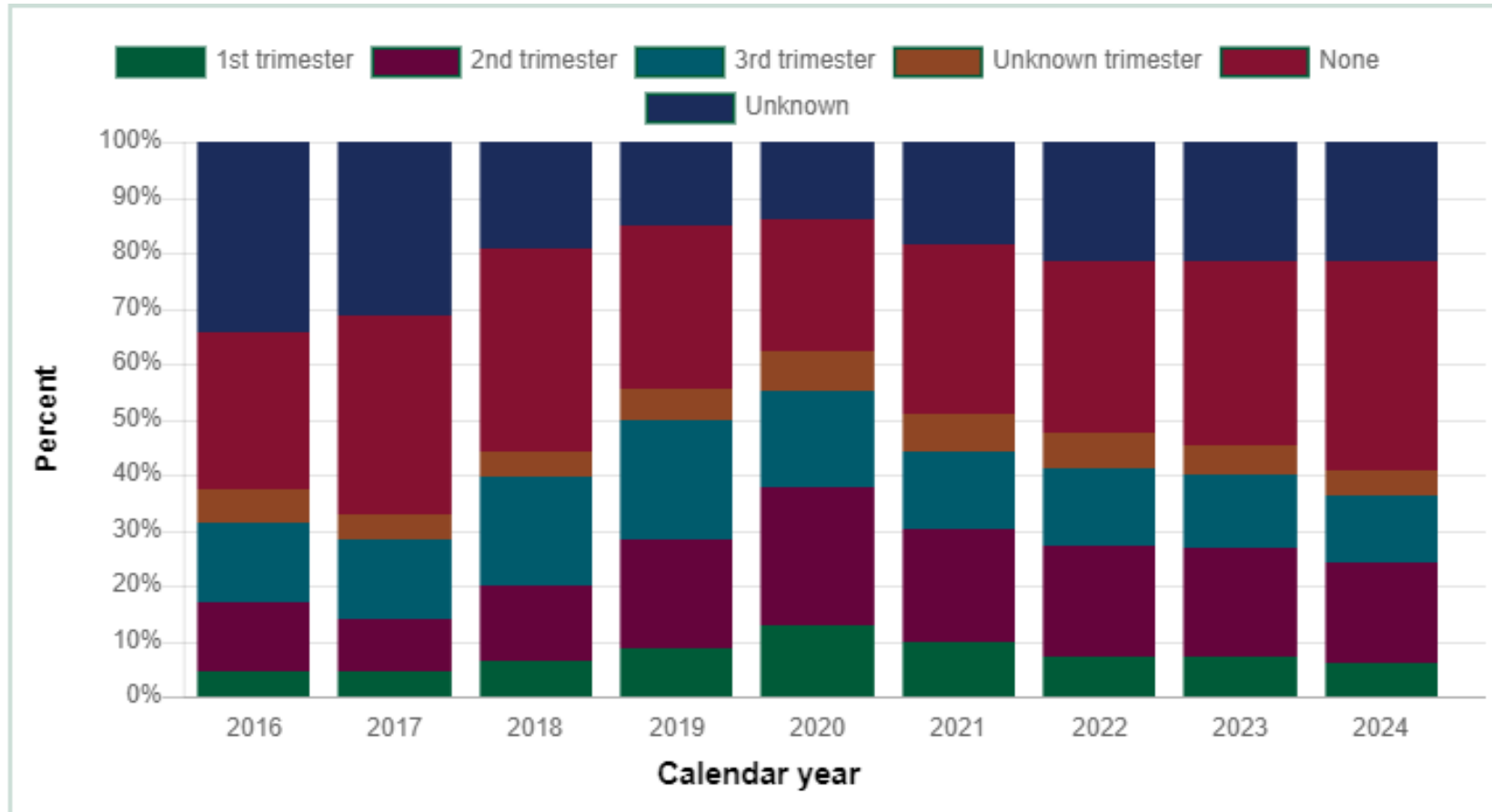
	ACT	NSW	VIC	QLD	SA	WA	TAS	NT	AUS
6 mo - < 5 yrs	34.2	17.5	21.2	15.4	17.0	16.5	23.0	33.4	18.3
5 - < 15 yrs	16.1	11.7	11.6	11.7	12.5	10.3	12.4	21.7	12.3
15 - < 50 yrs	24.4	16.7	18.6	15.9	18.6	13.7	18.9	29.2	17.6
50 - < 65 yrs	45.3	37.5	38.5	36.2	38.5	31.0	46.5	42.3	37.3
≥ 65 yrs	65.2	62.2	63.0	60.2	60.3	51.3	70.3	42.8	59.4

* Year-to-date (YTD) coverage calculated using vaccinations given 1 March - 31 August 2024 (inclusive).
AIR data as at 8 September 2024.

Coverage data in these tables may differ slightly from estimates published elsewhere due to differences in calculation methodologies and/or the AIR data being used in the calculation having been downloaded on different dates.

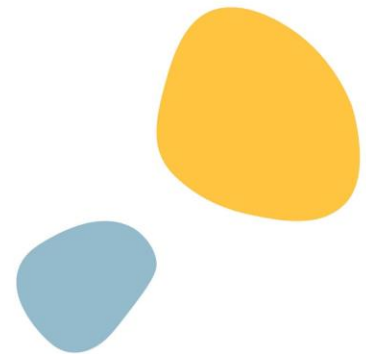


Antenatal immunisation



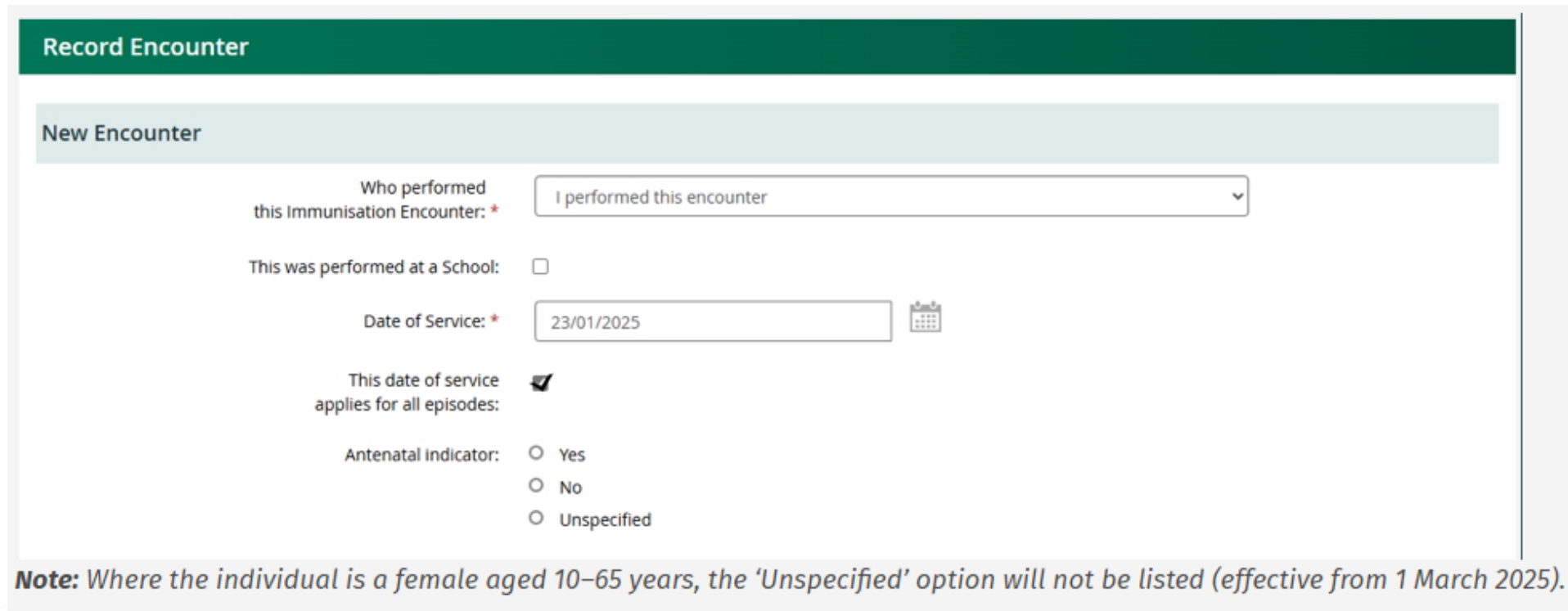
Source

Midwives Notification System, Information and System Performance Directorate, Department of Health WA.
Data extracted 11 February 2025



Recording antenatal immunisation

- Legislative changes under the AIR Act 2015 require mandatory antenatal reporting from 1 March 2025.

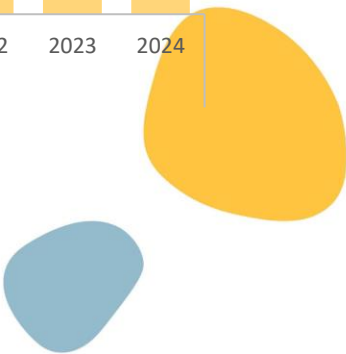
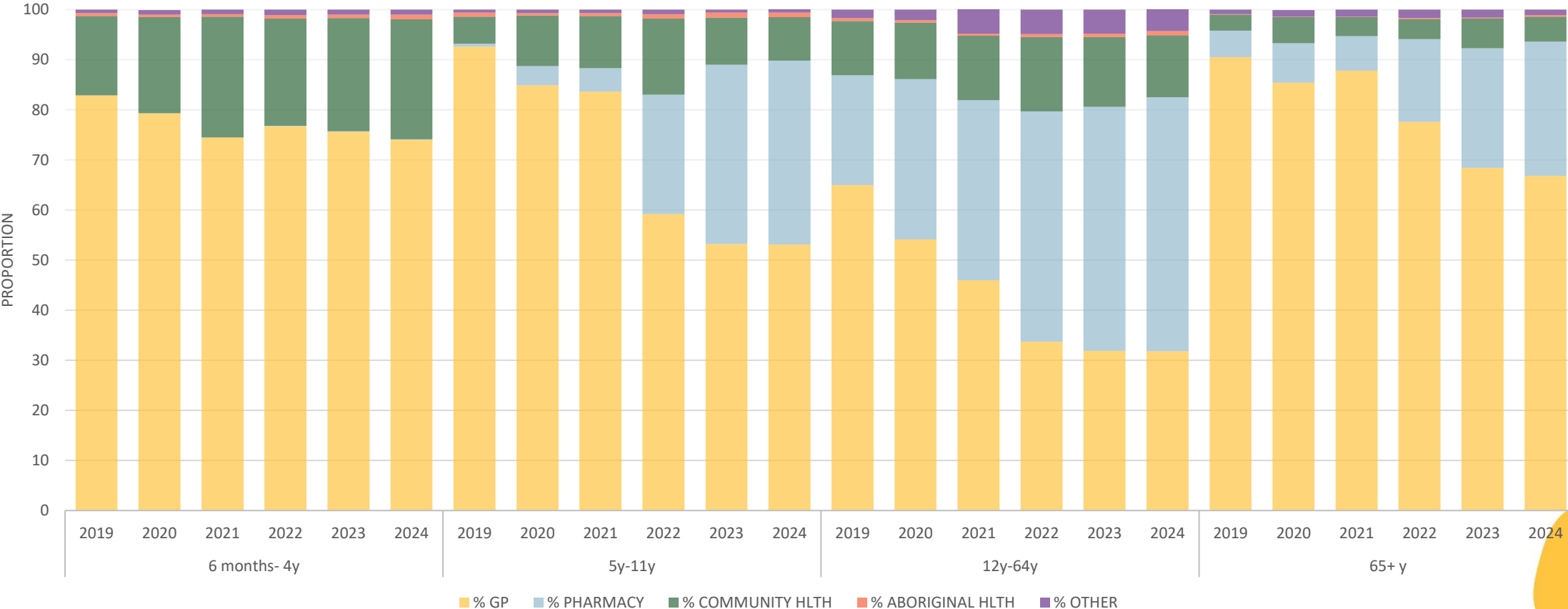


The screenshot shows a web form titled "Record Encounter" with a sub-section "New Encounter". The form contains the following fields and options:

- Who performed this Immunisation Encounter: *** A dropdown menu with the selected option "I performed this encounter".
- This was performed at a School:** An unchecked checkbox.
- Date of Service: *** A date input field containing "23/01/2025" with a calendar icon to its right.
- This date of service applies for all episodes:** A checked checkbox.
- Antenatal indicator:** Three radio button options: "Yes", "No", and "Unspecified".

Note: Where the individual is a female aged 10–65 years, the 'Unspecified' option will not be listed (effective from 1 March 2025).

Immunisation Providers



Key Points

- Influenza vaccination coverage declined in 2024 across all ages.
- Of concern is the low coverage in vulnerable cohorts, including pregnant people.
- GPs administered close to 50% of influenza vaccines in 2024. GPs are the preferred provider by children < 5 years and persons > 65 years; the proportion of pharmacy administrations are increasing.

